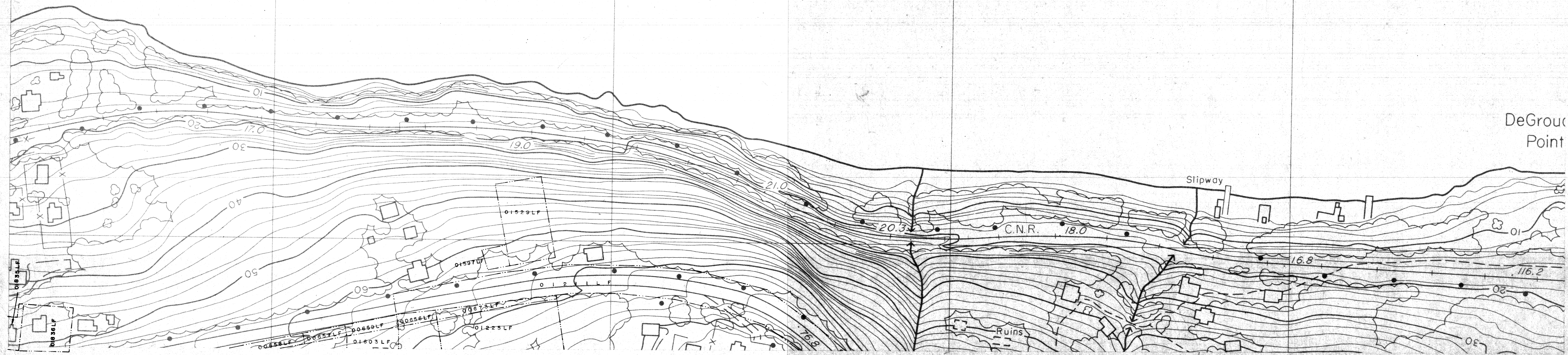


# Humber Arm

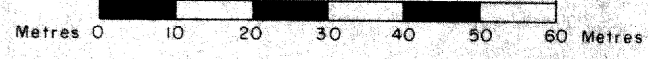
MAP LEGEND

- Paved Road .....
- Unpaved Road .....
- Trail .....
- Embankment .....
- Cutting .....
- Bridge, Culvert .....
- Railway, Siding & Spur .....
- Poles, Electrical, Telephone .....
- Transmission Line .....
- Overpass, Underpass .....
- Building .....
- Fence .....
- Hedge .....
- Wall .....
- Trees .....
- Wharf .....
- Marsh .....
- Shoreline .....
- River .....
- Ditch .....
- Indefinite Stream .....
- Stream .....
- Elevation Contours .....
- Depression Contours .....
- Spot Elevation .....
- Horizontal Control Monument .....
- Bench Mark .....
- Crown Land Boundary Points .....



DeGroux  
Point

SCALE 1:1000 (or 1" = 83.33')



Contour Interval 2 metres  
Elevations in metres above Mean Sea Level  
North American Datum 1927

3° Transverse Mercator Projection  
Zone 3 Central Meridian 58°30'W Long  
Scale Factor at Central Meridian 0.9999

Produced in 1980 from Aerial Photographs taken in 1978  
Compiled Photogrammetrically by  
Newfoundland's Labrador Surveys Ltd

1:2500 SERIES  
SHEET NUMBER: I2A13-351/NE NW

10 NW