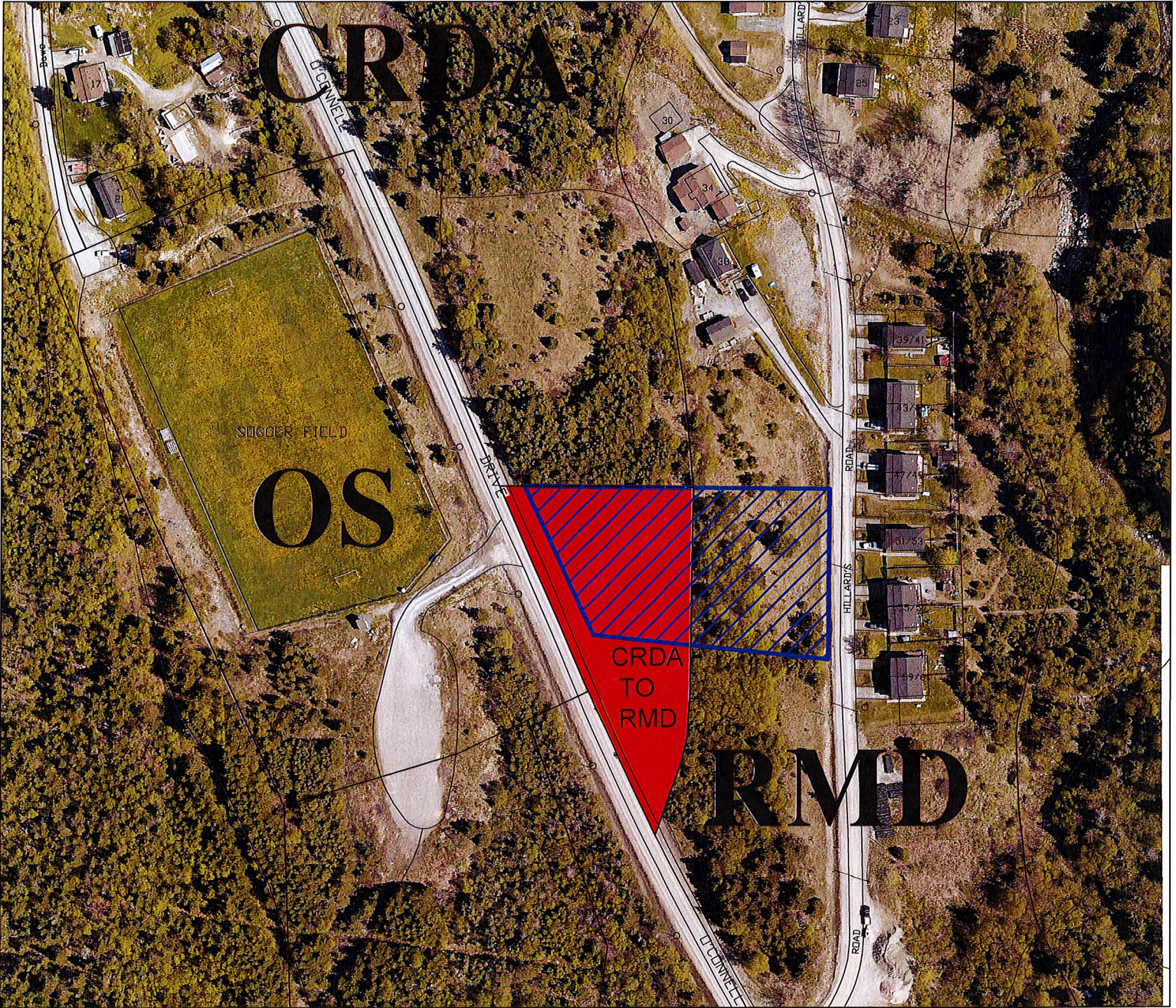


# C I T Y O F C O R N E R B R O O K

|  |                    |  |  |
|--|--------------------|--|--|
| LAND USE DESIGNATION / ZONING AMENDMENTS | DR19-03<br>MP19-03 | CURRENT DESIGNATION / ZONE:<br>Comprehensive Residential<br>Development Area | PROPOSED DESIGNATION / ZONE:<br>RESIDENTIAL / RESIDENTIAL MEDIUM DENSITY |
|--|--------------------|--|--|

LOCATION: 701 O'Connell Drive

AFFECTED MAPS: LAND USE ZONING MAP C-1 & C-5; GENERALIZED FUTURE LAND USE - MAPS A & B



**PROJECT:**

INTEGRATED MUNICIPAL SUSTAINABILITY PLAN 2012 -  
PROPOSED LAND USE DESIGNATION AND LAND USE  
ZONING AMENDMENTS

**AMENDMENT NOTES:**

These changes are proposed to accommodate residential development.

**LEGEND**

- BLUE HATCH - PROPERTY BOUNDARY
- RED HATCH - CRDA TO RMD