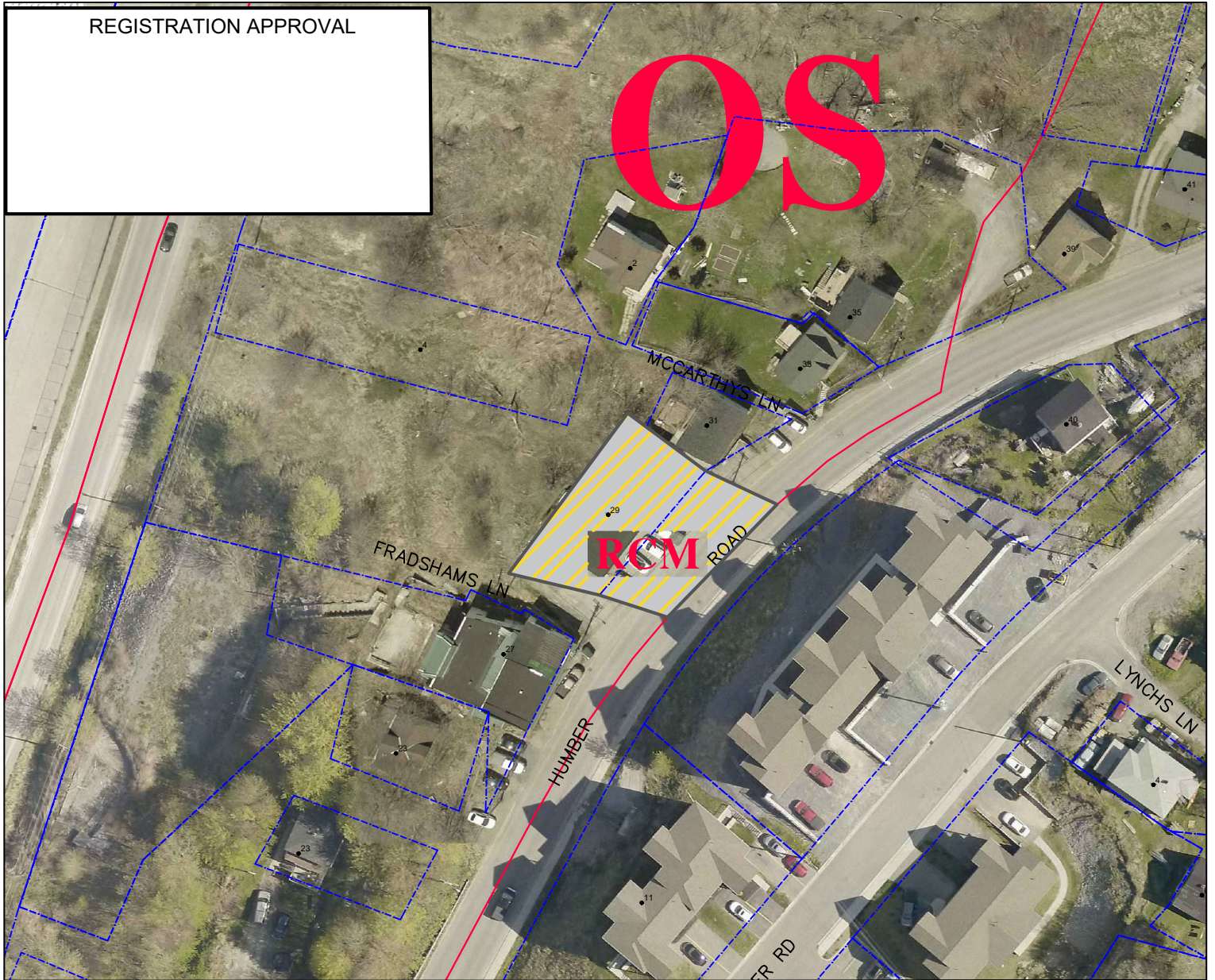


REGISTRATION APPROVAL

OS

RCM ROAD



LEGEND

ZONING BOUNDARY



CHANGE FROM OS TO RCM

Zone Title	Zone Symbol	Zone Title	Zone Symbol	Zone Title	Zone Symbol
Residential Special Density	RSD	Downtown Commercial	DTC	Community Service	CS
Residential Low Density	RLD	Downtown Smithville	DTS	Innovation District	ID
Residential Medium Density	RMD	General Commercial	GC	Open Space	OS
Residential High Density	RHD	Residential/Commercial Mix	RCM	Cemetery	C
Mobile/Mini Home Residential	MHR	Highway and Tourist Commercial	HTC	Environmental Protection	EP
Mosaic Residential	MR	Shopping Centre	SC	Environmental Conservation	EC
Comprehensive Residential	CRDA	Large Scale Commercial	LSC	Protected Water Supply Area	PWSA
Development Area		Waterfront Mixed Use	WMU	Rural	R
Townsite Residential	TR	General Industrial	GI	Solid Waste/Scrap Yard	SW/SY
Townsite Commercial	TC	Light Industrial	LI	Mineral Working	MW
Downtown Residential	DTR	Hazardous Industrial	HI	Special Management Area	SMA

CITY OF CORNER BROOK

PROJECT TITLE:

DEVELOPMENT REGULATIONS 2012

DRAWING TITLE:

PROPOSED LAND USE
ZONING MAP C-2
(AMENDMENT No. 24-03)



DATE: JULY 2024

SCALE: 1:1000



DESCRIPTION

LAND USE ZONING TO CHANGE FROM OPEN SPACE TO RESIDENTIAL COMMERCIAL MIX

THIS MAP IS A GRAPHICAL REPRESENTATION OF THE CITY OF CORNER BROOK SHOWING THE APPROXIMATE LOCATION OF ROADS, BUILDINGS AND OTHER ELEMENTS. THIS MAP IS NOT A LAND SURVEY AND IS NOT INTENDED TO BE USED FOR LEGAL DESCRIPTIONS.

CANADIAN INSTITUTE OF PLANNERS CERTIFICATION

I hereby certify that this City of Corner Brook Development Regulations 2012, Map C-2 has been prepared in accordance with the requirements of the Urban and Rural Planning Act.

M.C.I.P. _____

DATE _____

(M.C.I.P SEAL)

SEAL AND SIGNATURE

Certified that this City of Corner Brook Development Regulations a Plan 2012, Map _____ is a correct copy of the Development Regulations 2012, Map _____ approved by the Council of the City of Corner Brook on the _____ day of _____, _____ (month) (year)

MAYOR _____

CLERK _____

DATE _____

(COUNCIL SEAL)